

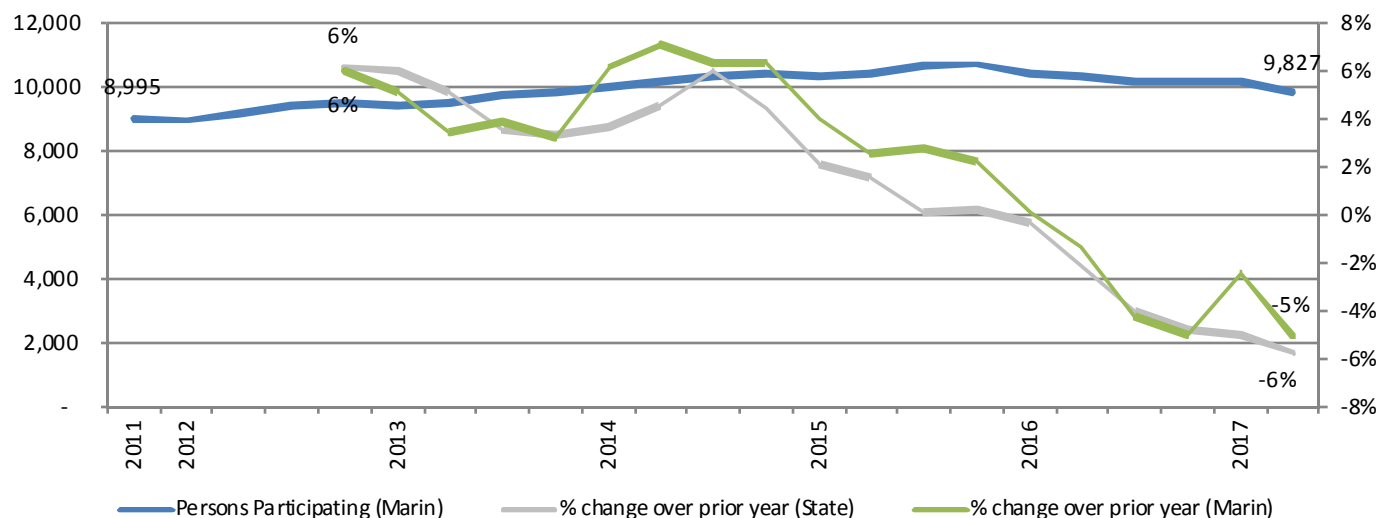
CalFresh County Performance Trends

Analysis of CDSS CalFresh Data Dashboard

Participation

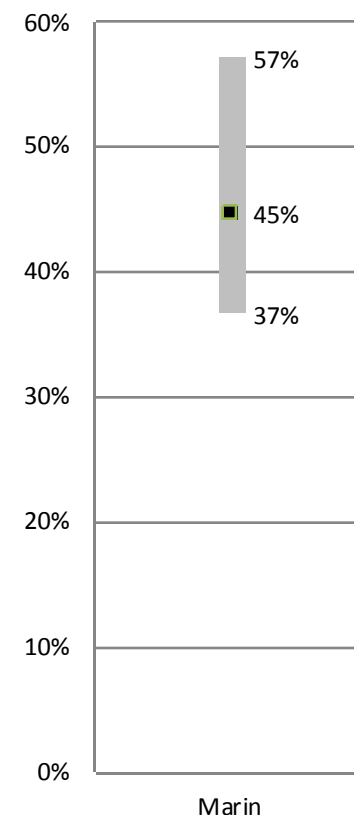
Marin

CalFresh Participation Growth

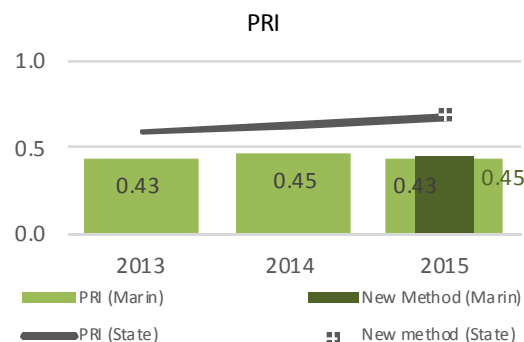
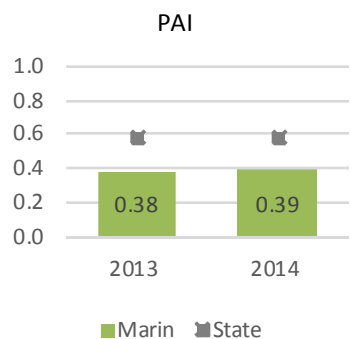


Program Reach Index (PRI)

2015
with Margins of Error for
Population below 125%
FPL



Participation Indexes



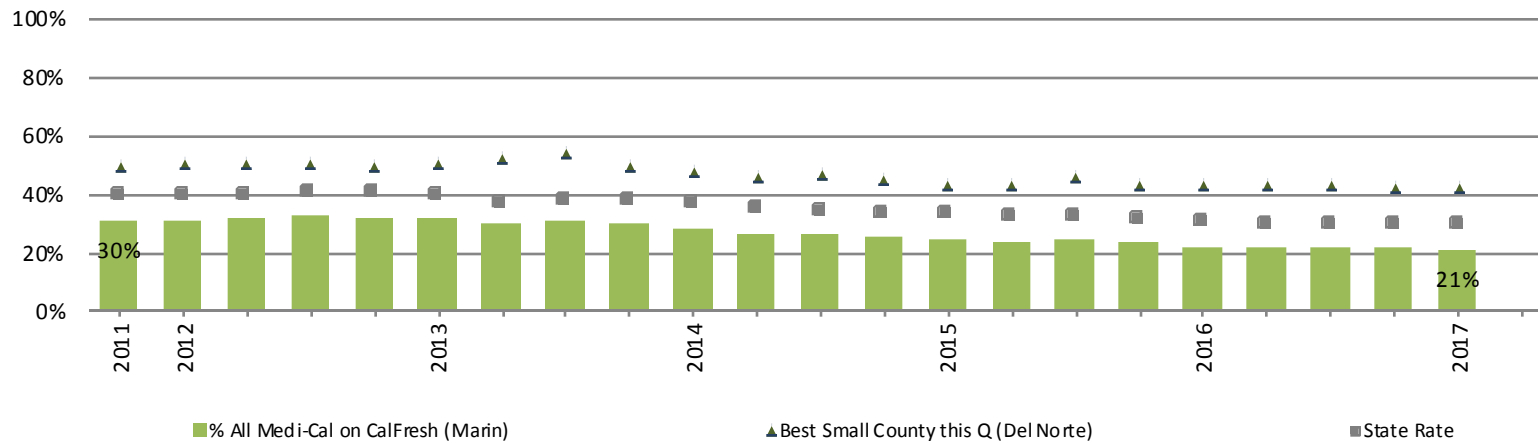
PAI: Aligns with USDA's PAI. Excludes county-based estimates of SSI recipients with low incomes, FDPIR, and Disaster CalFresh.

PRI: Developed by CDSS. Eligible population with income below 130% FPL, excludes estimates of low income SSI and undocumented immigrants. "New method" refines method to exclude undocumented children.

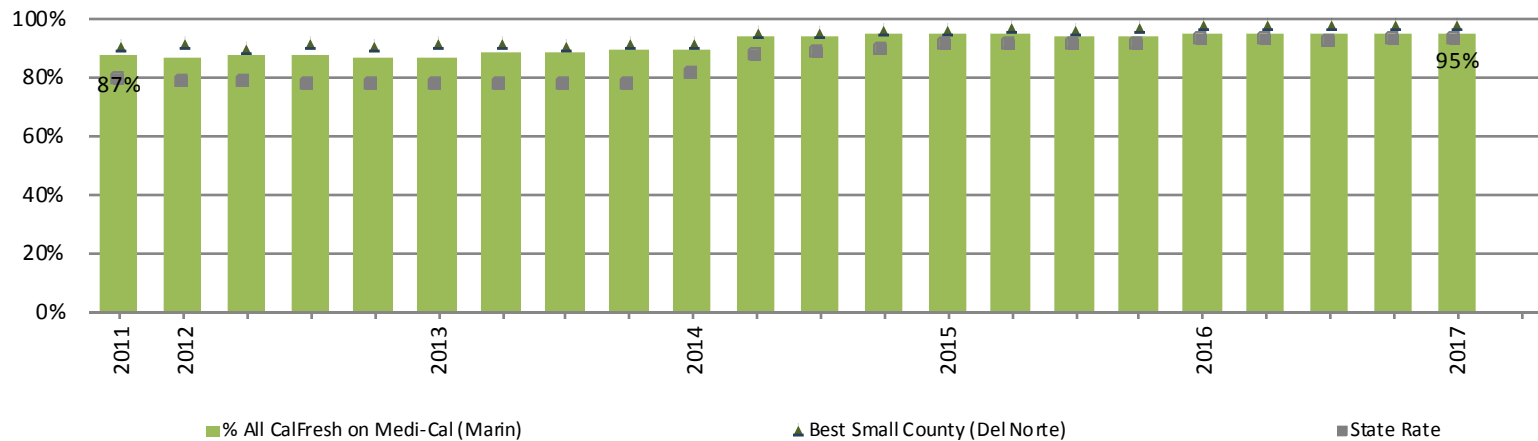
Dual Participation

Marin County

% All Medi-Cal Participants on CalFresh



% All CalFresh Participants on Medi-Cal



See county and regional comparison charts for January 2017 dual enrollment rates. <https://tinyurl.com/ya7dcsav>



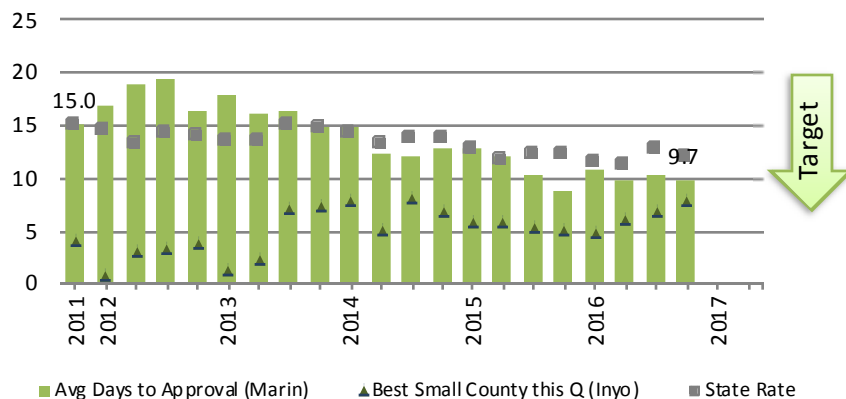
For questions, please contact Diana Jensen at djensen@sfmfoodbank.org.



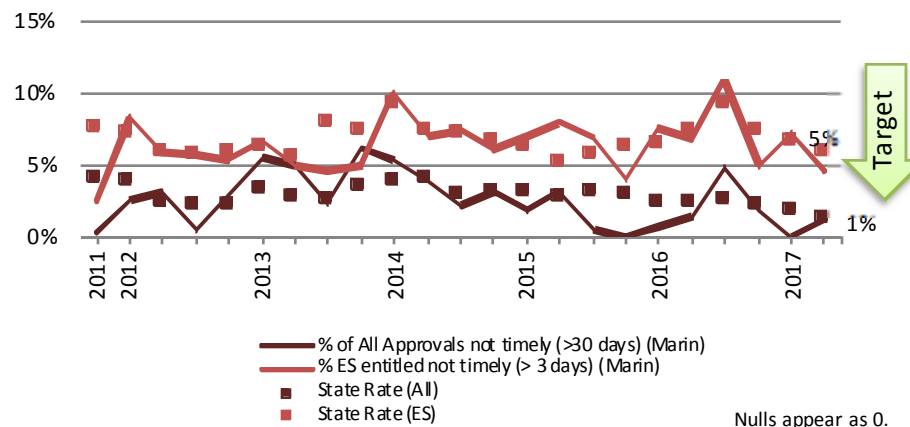
Timeliness

Marin County

Average Days to Approval (Regular & Expedited)



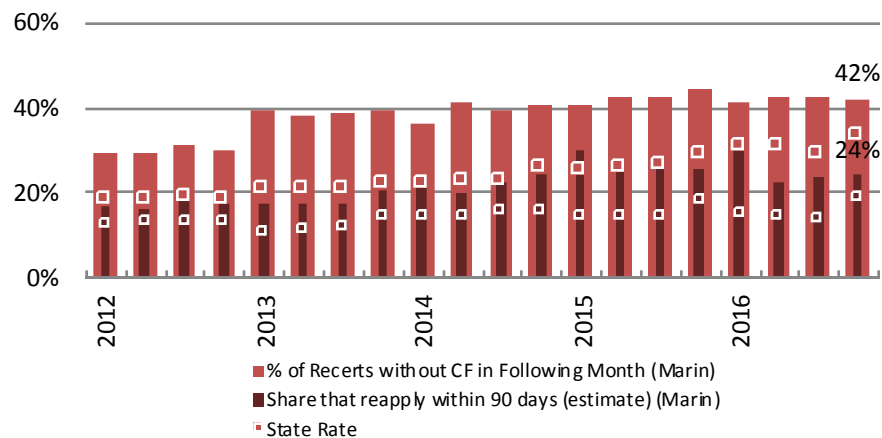
Timeliness Non-Compliance Rates



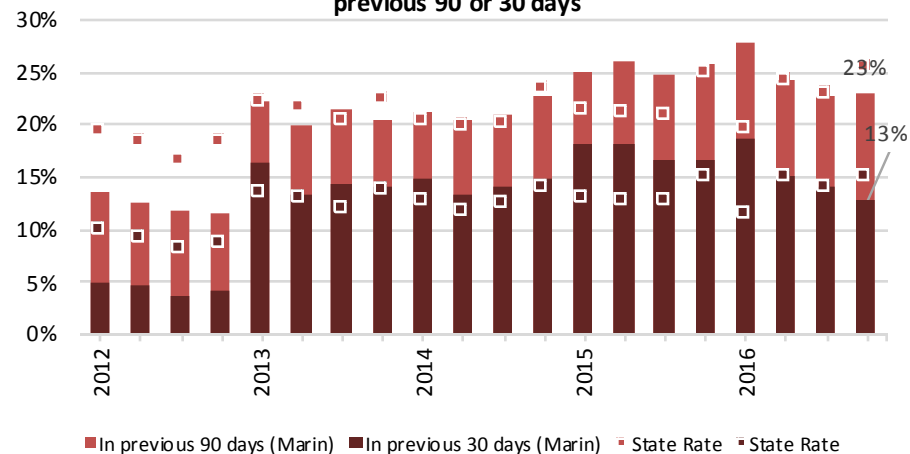
Churn

Marin County

Renewal Churn : Share of Recertification Cases that are not on CalFresh in the following month, and the share that reapply within 90 days



Share of applications that were receiving CalFresh in the previous 90 or 30 days



Sources:

Program Access Index: California Food Policy Advocates Website - <http://cfpa.net/>

Margins of Error are based on American Community Survey 1-year and 5-year estimates.

Average Days to Approval data are available in the Churn Data Reports: <http://www.cdss.ca.gov/inforesources/CalFresh-Resource-Center/Data>

All remaining data: California Department of Social Services CalFresh Program Data Dashboard and Churn Rates Reports - <http://www.cdsscounties.ca.gov/foodstamps/> - Data reflects files posted as of 8/30/2017.

