



# COVID-19 HOLIDAY REPORT

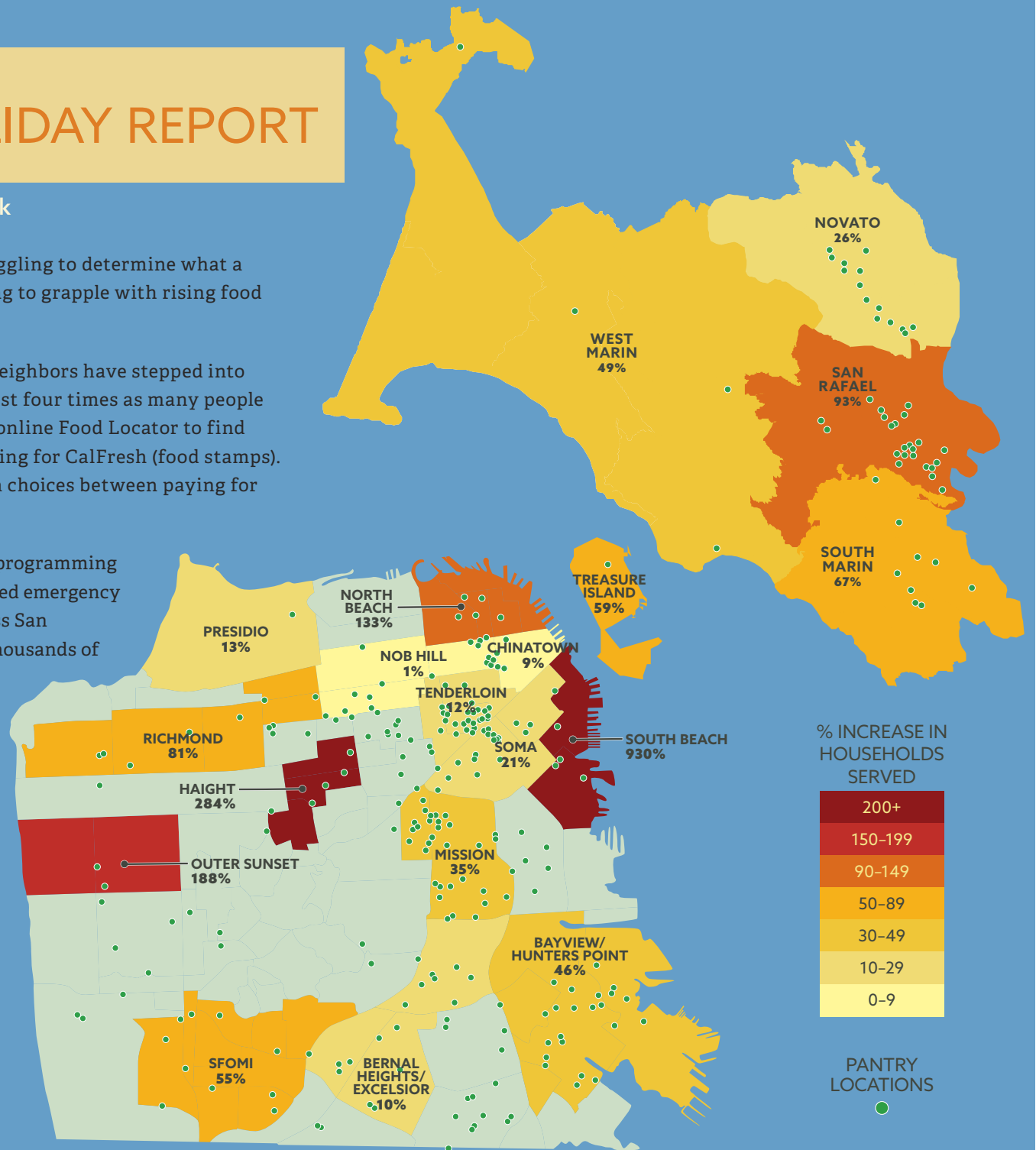
[sfmfoodbank.org](http://sfmfoodbank.org) [f](#) [@](#) [i](#) [t](#) [v](#) [@sfmfoodbank](#)

This will be a holiday like no other. People are struggling to determine what a safe family gathering will look like while continuing to grapple with rising food insecurity in our community.

As the COVID-19 crisis has unfolded, many of our neighbors have stepped into our pantry lines for the first time. In October, almost four times as many people compared to before the pandemic logged on to our online Food Locator to find resources, an open food pantry, or assistance applying for CalFresh (food stamps). More people than ever before are making the tough choices between paying for either rent, utilities, medication, or food.

In response to the pandemic, we raced to create new programming and transform how the Food Bank operates. We opened emergency Pop-up pantries in areas with the greatest need across San Francisco and Marin, and started home-delivery to thousands of seniors sheltering in place. In many neighborhoods we are now distributing double, triple, or even ten times the amount of food.

As we enter the holiday months, it is more important than ever before to make sure families can put food on their table. That is why during the month of November, we will ensure to hand out grocery bags with food items such as cooking oil, chicken, and extra seasonal produce. We could not do this without your support. Thanks to countless donors, volunteers, and corporate partners, we will provide food for close to 1.5 million meals this holiday season. It is a testament to our community's dedication to provide food for all.





# THE HOLIDAY SEASON *By the Numbers*

[sfmfoodbank.org](http://sfmfoodbank.org) [@sfmfoodbank](https://www.instagram.com/sfmfoodbank)



— This year —  
**55,000**  
HOUSEHOLDS RELY ON US EVERY WEEK  
— Almost —  
**2× MORE**  
THAN LAST YEAR



OUR COST FOR FOOD  
HAS INCREASED  
**60%**  
— This holiday season —  
WE'LL SPEND  
**3× MORE**  
ON FOOD COMPARED  
TO LAST YEAR



— Last year —  
WE DISTRIBUTED  
**855,000**  
HOLIDAY MEALS  
— This year —  
WE'LL DISTRIBUTE  
**1,460,000**  
HOLIDAY MEALS



— Last year —  
WE HOME-DELIVERED TO  
**3,400**  
SENIORS AND PEOPLE  
WITH DISABILITIES  
— This year —  
**8,000+**  
SENIORS GET HOLIDAY  
GROCERIES DELIVERED  
TO THEIR DOOR



— Last year —  
**275+**  
FOOD PANTRIES HELP  
DISTRIBUTE THE FOOD  
— This year —  
**300+**  
PANTRIES WILL HELP  
including  
**29**  
EMERGENCY POP-UPS



— This year —  
WE'LL PROVIDE FAMILIES WITH  
**232,722 LBS**  
OF CHICKEN, ABOUT  
**50,000 LBS**  
OF TURKEY,  
and over  
**1,000,000 LBS**  
OF FRESH PRODUCE

